



news

6 NEWS

Have you heard these reasons not to use Linux?

7 TUMBLEWEED

This innovative new project brings the rolling release concept to openSUSE.

7 DROID GINGERBREAD

Google rolls out the new Android Gingerbread, along with a compatible new phone known as the Nexus S.

8 CALLIGRA

KDE forks the popular KOffice productivity suite.

8 NOVELL SOLD

Networking giant Novell finds a buyer, with most of the assets going to Attachmate and 882 patents landing with a Microsoft-backed holding company.

SERVICE

3 Comment

16 DVD

18 Letters

96 Featured Events

98 Preview

Linux Magazine ISSN 1471-5678
Linux Magazine is published monthly
by Linux New Media Ltd, Manchester,
England. Company registered in England.

Sys Admin

This month we look at tools, technologies, and techniques for the next generation of system administrators.

20 CAcert Save money and stay free with this community-based digital certificate authority.

28 DNSSEC The Internet name resolution system is vulnerable to attack, but maybe the solution is closer than you think.

34 Right-Size RAID A few simple calculations will show you whether your storage system is sized for success.

38 OpenNMS This nifty monitoring tool is ideal for large, geographically distributed networks.

Community Notebook

87 Doghouse
maddog ponders putting 2TB of data on a vintage tape drive.

88 Kernel News
Zack Brown reports.

90 Cache
Mobility and *Smart Developer*.

91 LISA
Reporting from the Usenix Large Installation System Admin show.

92 Projects on the Move
Time management tools.

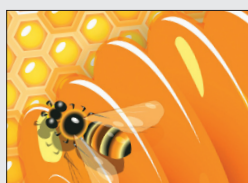
95 SC10
Sizing up SuperComputing 2010.

HIGHLIGHTS

- 28 DNSSEC** DNS Security is finally making its way to the top-level Internet domains.
- 52 SECRETS** The Secrets Service API provides keyring services for both Gnome and KDE.
- 56 BLENDER 2.5** Create your own 3D models and designs with the powerful Blender.
- 70 DIASPORA** Discover a new project that promises social network with an open source twist.

FEATURES

48 Project Honey Pot
We show you why a little bait is all you need to turn up spammers.



56 Blender 2.5
The ever-popular Blender provides professional 3D modeling for everyone.

- 48 Project Honey Pot**
Set a trap to catch spammers in the act.
- 52 Secrets Service API**
Gnome and KDE developers team up on a cross-desktop keyring tool.
- 54 Ask Klaus!**
Knoppix creator Klaus Knopper looks at RAID mirrors, persistence, version variance, and Skype woes.

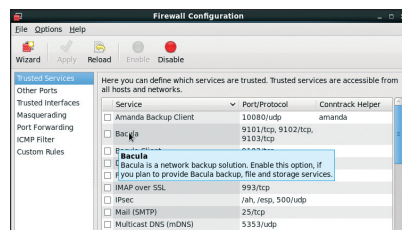
- 56 Blender 2.5**
A hands-on guide to building your own 3D model.
- 63 Charly: Cluster SSH**
This load balancing has a minimalist Tk text interface.
- 64 Security Lessons: OpenID**
Outsourcing authentication.
- 66 Perl: IRC Monitor**
A bot listens for keywords and notifies a user.

LINUXUSER

- 70 Diaspora**
Protect your privacy with this open source social networking alternative.
- 74 Command Line**
Tools for managing users.
- 78 Workspace: Piwigo**
This handy tool helps you host your own photo gallery.
- 84 Synapse**
This simple launcher will help you start programs with a few easy keystrokes.

REVIEWS

- 42 Red Hat Enterprise Linux 6**
We show you around the latest Enterprise Linux release.





ISSUE 123 FEB 2011
LINUX MAGAZINE
Try the Live distros with just one mouse click!
Install bonus software directly from additional repositories!
6 "buntus on one DVD!"

ubuntu 10.10 Sixpack

SEE P6 FOR FULL DETAILS

Ubuntu Live

Ubuntu Alternate

Kubuntu Live

Lubuntu Live

Xubuntu Live

Mythbuntu Live

&


Linux Mint 10
"Julia" - GNOME edition