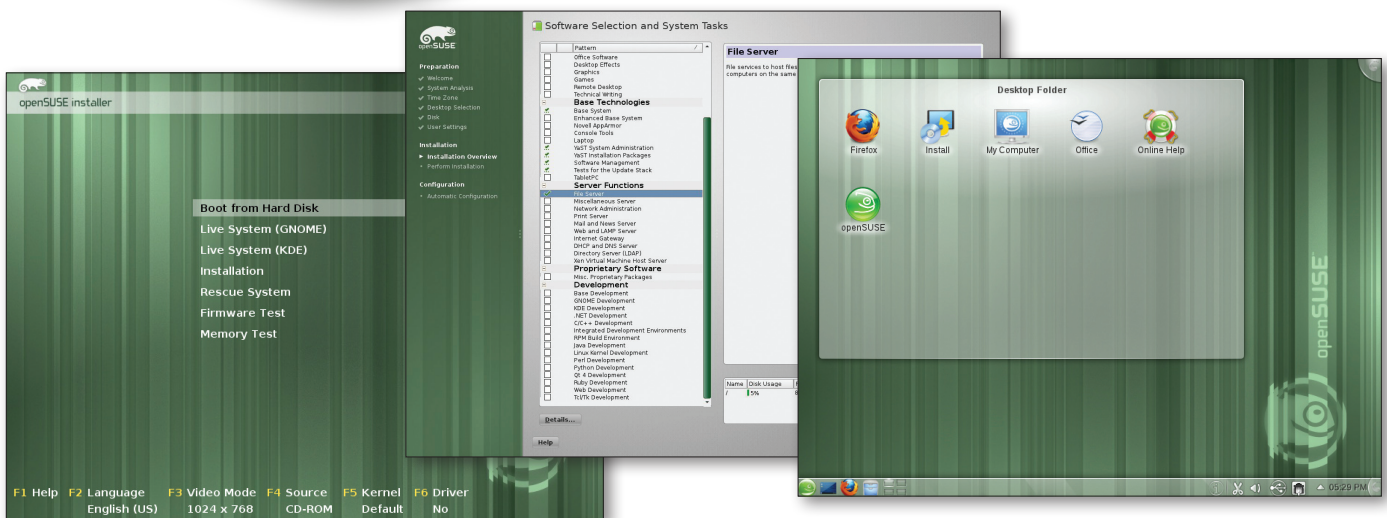


# On the DVD



## openSUSE 11.4

This month's *Linux Magazine* DVD brings you the brand new openSUSE 11.4 release [1]. This disc contains the openSUSE "promo" edition, including two Live boot options, with a choice of the KDE or Gnome desktop (left screenshot). openSUSE lives up to its reputation for delivering the freshest and latest software [2], with up-to-date tools such as Firefox version 4.0 beta 12 and the LibreOffice fork of OpenOffice. Under the hood, the Zypper package management tool now fetches only changed files before starting the installation, resulting in a faster repository refresh, package install, and update. The installer offers a wide range of installation choices (middle screenshot).



## QUICK ONLINE UPGRADE

The quickest way to upgrade an existing openSUSE system is at the command line. First, update the rpm package, change the path for all package sources from 11.3 to 11.4 (either with YaST in the *Software | Manage Repositories* dialog or at the command line), and make sure you enable at least the oss and update software directories. If you use packman or any other repository, change the path to version 11.4 there as well. Of course, it's always a good idea to back up your system before upgrading.

To upgrade, enter:

```
sudo zypper refresh
sudo zypper install rpm
sudo zypper dup
```

The first command updates the list of available packages, the second downloads the updates, and the third installs the packages. After you reboot, your system should now be up to date (right screenshot). Alternatively, you can upgrade graphically using SUSE's YaST management tool.

## ADDITIONAL RESOURCES

- [1] openSUSE 11.4 main product page: <http://en.opensuse.org/Portal:11.4>
- [2] Known bugs: [http://en.opensuse.org/openSUSE:Most\\_annoying\\_bugs\\_11.4](http://en.opensuse.org/openSUSE:Most_annoying_bugs_11.4)
- [3] openSUSE forums: <http://forums.opensuse.org/>
- [4] openSUSE documentation: [http://en.opensuse.org/SDB:Official\\_documentation](http://en.opensuse.org/SDB:Official_documentation)