



# MANDRIVA LINUX

integration with Mobile 5 and 6, BlackBerry, and Nokia devices.

Other improvements include the Elisa media center, which is based on the GStreamer media framework, the OS X-inspired Avant Window Navigator, and the Miro Internet TV tool.

Mandriva has also upgraded the package management system with performance improvements and a new system for obtaining and displaying package information.

The Drakconnect network configuration utility includes better support for NDISwrapper, and the Mandriva installer adds new options for building a boot menu.

## Package Rebuild

According to the Mandriva developers, “For the first time in a Mandriva release, an automated package rebuild was carried out during Mandriva Linux 2008’s Spring development cycle.”

The development team rebuilt a vast number of packages, which means that “the overall consistency of the repositories will be at its highest for many releases.”

## Easy Installation

Mandriva’s installer supports over 50 languages and automatically configures a wide range of hardware. The in-

staller includes several advanced configuration options and also supports a rescue mode for saving the system in case of failure.

## Control Center

Mandriva’s famous Control Center adds new features and functions with each release. The Control Center is a central spot for configuring your Mandriva system. From a single-user interface, you can manage software, configure hardware devices, set up network connections, configure services, add or remove users, manage mount points, configure personal firewall protection, and set system boot options.

Within the windows of the Control Center, you’ll find dozens of simple and intuitive GUI-based tools for managing your system. Many of these tools come with wizards for easy input.

## Why Mandriva?

Mandriva Linux 2008 Spring introduces new enhancements for a new generation of Linux.

The latest release supports more hardware than any previous Mandriva, and the improved tools for wireless configuration and package management make this version the friendliest yet.

We hope you enjoy Mandriva Linux 2008 Spring – this month’s *Linux Magazine* DVD. ■

This year marks the 10th anniversary of Mandriva Linux, a classic distro known for easy installation and a sophisticated set of admin tools. With the latest release, Mandriva rolls out new tools, a new sound infrastructure, and improved support for wireless cards and mobile devices.

We are proud to bring you Mandriva Linux 2008 Spring as this month’s *Linux Magazine* DVD.

## What’s New?

The newest Mandriva comes with Gnome 2.22, KDE 3.5.9, and Linux kernel 2.6.24. Debuting in the default configuration is the PulseAudio sound infrastructure – a powerful system for managing sound streams and sound devices. New mobile support includes enhanced

### System Requirements

**Processor:** Pentium and AMD processors.

**Memory:** 512MB recommended.

**Free Disk Space:** 4GB recommended.

See the Mandriva hardware database (<http://www.mandriva.com/hardware>) for additional information.

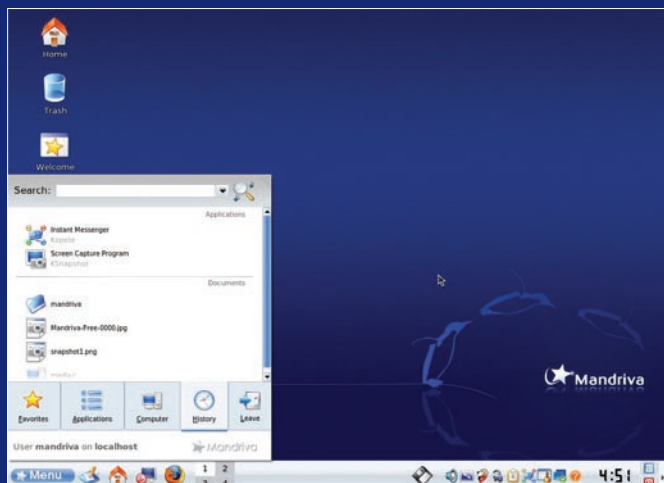


Figure 1: The KDE 3.5.9 desktop comes with new art and many improvements.

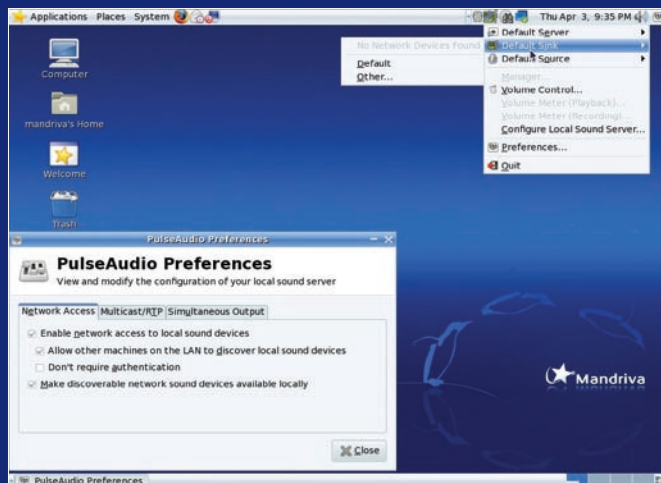


Figure 2: You can manage sound streams and sound devices with PulseAudio.



**HIGHLIGHTS**

- Linux Kernel 2.6.24
- X.org 7.2
- KDE 3.5.9
- Gnome 2.22
- glibc 2.7
- PulseAudio 0.9.9
- Apache 2.2.8
- Samba 3.0.28
- Mono 1.2.6
- OpenOffice 2.4.0
- Firefox 2.0
- Thunderbird 2.0
- Beagle 0.3.3
- K3b 1.0
- Scribus 1.3.3
- VirtualBox 1.5.6
- Amarok 1.4.8
- GIMP 2.4.5
- Elisa 0.3.5
- Miro 1.2

**ADDITIONAL RESOURCES**

- [1] Mandriva:  
<http://www.mandriva.com>
- [2] Mandriva Community:  
<http://wwwnew.mandriva.com/en/community>
- [3] Mandriva Knowledge Base:  
<http://club.mandriva.com/xwiki/bin/view/KB/>

**HELP & SUPPORT**

Mandriva offers several sources for help and support. Start with the websites listed in the box titled "Additional Resources." Other help sources include the Mandriva forums: <http://forum.mandrivaclub.com> and the official Mandriva documentation <http://club.mandriva.com/xwiki/bin/view/KB/OfficialDocumentation>.

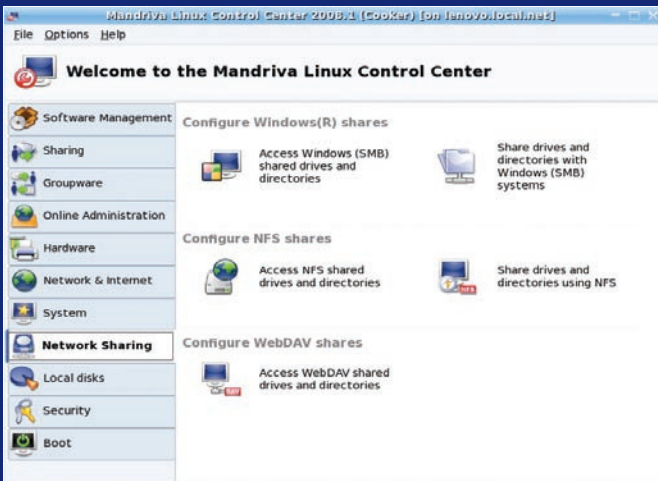


Figure 3: The Control Center is a central spot for configuring your Mandriva system.

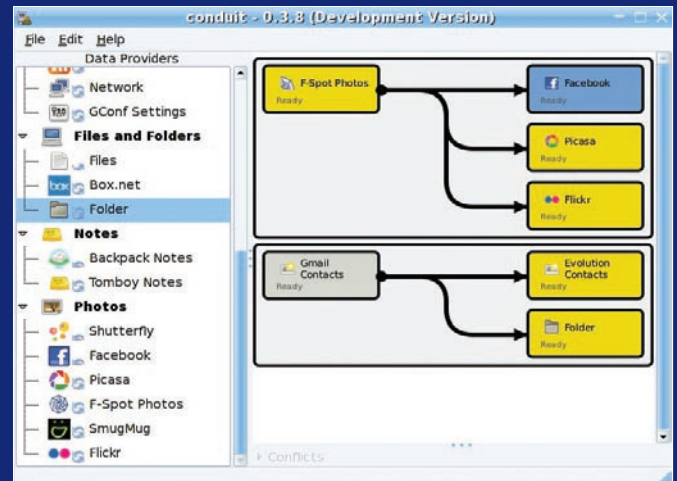


Figure 4: Keep your devices in line with the Conduit synchronization tool.