

Individual bootsplash for your own system

# SPLASHING OUT

Sebastian Kautitzki, Fotolia

Users interested in customizing even the smallest detail of their machines will probably want to modify the boot screen. We show you how to carry out this task with openSUSE 11, Ubuntu 8.x, and their derivatives.

BY ANDREAS BOHLE AND JÖRG LUTHER

**M**any recent distributions hide the Linux system's start messages behind a colorful image with a progress indicator. The bootsplash [1] has long become the trademark of each distribution – and is a well-known phenomenon in the world of Windows. A customized system needs a fair amount of manual attention.

Thus far, modifying the bootsplash meant manually modifying the kernel [2]. For one thing, you needed to enable support for the framebuffer device with support for at least 16-bit color. For another, it also meant installing a patch from the bootsplash homepage, although the makers of the original bootsplash system refer to more state-of-the-art approaches on their front page.

Several alternative approaches are available to Linux users now: Splashy [3], USplash [4], and Red Hat Graphical Boot. Splashy and USplash run in user-space, which means on a user account. This offers a number of advantages. For one thing, it does not affect system stability if the program code turns out to be

buggy. For another, it makes configuration and customization easier.

## OpenSUSE 11.0

OpenSUSE still relies on the legacy, kernel-based bootsplash method. After installing the system, YaST2 takes you to

two packages with data for the bootsplash: *bootsplash* contains the framework and *bootsplash-branding-openSUSE* has the files with the current openSUSE theme (Figure 1).

On your local filesystem you need the files from the second package in */etc/*

**Table 1: Bootsplash Commands**

| Variable               | Value             | Description   |
|------------------------|-------------------|---|
| <i>version</i>         | 2 or 3            | Bootsplash version used                               |
| <i>state</i>           | 0 or 1            | Enable/disable graphical bootsplash                   |
| <i>jpeg</i>            | Pathname          | Background for outputting boot messages               |
| <i>silentjpeg</i>      | Pathname          | Graphic for non-output mode                           |
| <i>fgcolor</i>         | 0 to 8            | Text foreground color                                 |
| <i>bgcolor</i>         | 0 to 8            | Text background color                                 |
| <i>tx/ty</i>           | Numeric values    | Top left corner of a text frame                       |
| <i>tw/th</i>           | Numeric values    | Width/height of a text frame                          |
| <i>text_x/text_y</i>   | Numeric values    | Top left corner of TrueType text                      |
| <i>text_size</i>       | Numeric value     | Size of text in points                                |
| <i>text_color</i>      | Hexadecimal value | Text color  |
| <i>box</i>             | See documentation | Draws boxes on the background image                   |
| <i>overpaintok</i>     | 0 or 1            | Update boxes only, not the whole screen               |
| <i>progress_enable</i> | 0 or 1            | Enable/disable progress indicator                     |
| <i>percent</i>         | 0 to 65535        | Starting value for calculating the progress indicator |



Figure 1: The default background in openSUSE can get fairly boring.

*bootsplash/themes*. Check the directory for the folder *openSUSE*, which contains all the critical files for an animated bootsplash along with the background for the kernel and startup messages. Pressing F2 at boot toggles between the normal startup screen and detailed messages.

The hierarchy in the *openSUSE* folder does not completely reflect the instructions on the bootsplash homepage. According to the HOWTO, if you want to define a new theme, you need *images/*, *config/*, and *animations/* directories for the graphics data and configuration. The additional *bootloader* folder stores the files with the text that openSUSE displays in the boot menu.

Whether or not you get to see a bootsplash, and which one if so, is configured in the */etc/sysconfig/bootsplash* file with two variables: *SPLASH* and *THEME*. The first of these can be set to *yes* or *no* to enable or disable the boot screen. The second variable references the folder (below */etc/bootsplash/themes*) with the bootsplash data.

The variety of screen resolutions makes working with a generic theme for distribution on the Internet difficult. To avoid seeing black borders or just a section of the original image, you will need a separate background image for each screen size. The easiest way of handling this is to create a copy of the *openSUSE* directory.

To modify the background image, use an image manipulation tool like GIMP (see the GIMP article on page FIXME ff.) or a vector drawing program such as Inkscape [5]. In this way, you can create

the required files by scaling the original image to the right size or by cropping the image. The *Convert* tool from the *Imagemagick* package does this for you automatically; you just need to modify the original graphic.

To add animation to your boot screen, create a series of PNG-for-

matted images, which you should number in the correct sequence. Make sure you pad the start of the file name with zeros to help the filesystem sort files in the right order. Then use *convert* to add individual files to the animation:

```
convert -delay 20 anim*.png anim.mng
```

The next step is to put the pieces together. All the central settings are located in the *config/* directory, and you can edit the files for the individual screen sizes, all of which start with the word *bootsplash-* and have a *.cfg* suffix. Various configuration commands are available, depending on the bootsplash package version you are using.

The current openSUSE uses commands from version 3. The “Bootsplash Commands” table gives you an overview, and more details are available on the web [6] or in the */usr/share/doc/bootsplash/README.config* file on any openSUSE machine with the bootsplash package installed.

Finally, you need to create a new initial ramdisk. The following command takes care of this for you:

```
mkinitrd -s Screen width x 2  
Screen height
```

This completes the package deal, and after you shut down your machine and restart, you should see the new graphics and texts you created.

## Ubuntu StartUp Manager

The Grub boot manager supports the use of individual splash screens; however,

the process for modifying and integrating them is fairly convoluted [7]. The steps for creating splash screens for the USplash system introduced by Ubuntu, which displays the Ubuntu logotype and a progress indicator when you boot the distribution, turns out to be even more complex. To do this, you need to integrate the required image with a shared library (.so) and dump it at the right place on the system.

Fortunately, an easier approach lets users of Debian, Ubuntu, and their derivatives define splash screens for Grub and USplash via a graphical interface. The tool for this is the StartUp Manager [8], which can modify a number of other startup settings into the bargain. On Ubuntu and its derivatives, you need to install the StartUp Manager by loading the *startupmanager* package from the Universe repository. After loading the package, the StartUp Manager will be available in *System | System Management* in your Gnome menu.

The tool has four tabs with various options for the boot environment. The options you need for configuring the Grub and USplash settings are located in the first two tabs: *Boot Options* and *Appearance*.

## Finding Graphics

In the *Display* tab in *Boot Options* (Figure 2), you can set the resolution and color depth for displaying the USplash image. *Others* lets you specify whether the boot menu and bootsplash should be visible and whether system messages

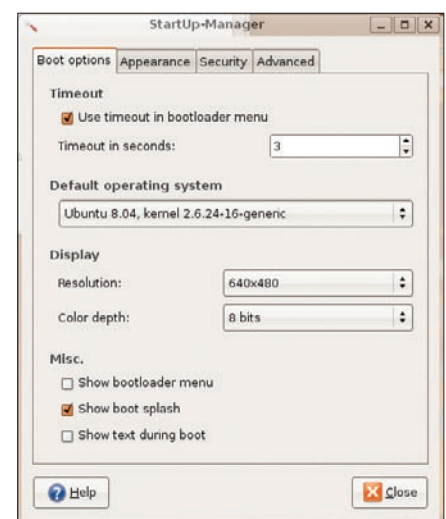


Figure 2: The StartUp Manager has a total of four tabs with numerous options for modifying the boot process look and sequence.

should appear in the bootsplash. The *Appearance* tab has *Boot menu themes* and *Usplash themes* sections in which you can specify the images to use. To do so, you need to populate the lists with candidates from your filesystem by pressing *Manage*...

Boot menu themes can be practically any graphic in a format that Linux supports (e.g., GIF, JPG, PNG). The StartUp Manager will then attempt to use ImageMagick to convert the file to a format that Grub can handle.

Some fairly strict rules apply to the formats, and the results are not always what you expect. In most cases, some TLC makes sense (see the “Bootsplashes for Grub” box).

Images for the USplash theme must be packed in a shared library, as mentioned earlier. For a selection, check out Ubuntu-art.org [9] or Gnome-look.org [10] (Figure 3) – type “usplash” as your search key. Typically, you can then download tarballs with packed USplash themes and unpack the library (file suffix .so) in any directory. Then browse and select by pressing *Manage Usplash Themes*.

## Polishing

After setting up everything to your satisfaction, you can save the settings and click *Close*. Depending on how much material the StartUp Manager has to convert and configure, saving the settings can take 20 to 30 seconds.

Don't interrupt the tool whatever you do. Doing so will leave Grub's configuration file, */boot/grub/menu.lst*, in an inconsistent state, which could cause the system to do something strange the next time you boot.

### Bootsplashes for Grub

The maximum resolution for a Grub bootsplash is 640x480 pixels, with a maximum of 14 colors. Despite these restrictions, it is still possible to define attractive boot screens if you choose the right background image. Vector graphics and cartoons in particular are an excellent choice for use with Grub.

Images with fewer colors can best be converted to a Grub-compatible format with the command:

```
$ convert -resize 640x480 -colors 14
image.png image.xpm
```

For images with a higher color depth, the



**Figure 3:** The Gnome and Ubuntu artwork pages have many USplash themes in various shapes and colors.

The next time you launch Linux you will (hopefully) see a neat, new splash screen. The text in the Grub selection menu might be difficult to read depending on your choice of background image, but don't worry. After booting, you can launch the StartUp Manager again and modify the background, selection bar and text colors in the *Appearance* tab. Also, don't forget to check *Apply colors to boot menu*.

Very little can go wrong with the USplash image. In the worst case – for example, if you choose the wrong resolution or color depth – the screen might go blank for a couple of seconds until the Display Manager comes up with the login screen. If this happens, modify the *Display* settings in the StartUp Manager's *Boot Options* tab. Although higher

resolutions and color depths will typically give you more attractive results, you do need to keep to the physical limits of your graphics adapter and display.

## Conclusions

Just a couple of manual steps lets you customize some important system files to suit your own tastes. In addition, you do not need to be well versed in configuration syntax to achieve some attractive results. ■

### INFO

- [1] Bootsplash: <http://en.wikipedia.org/wiki/Bootsplash>
- [2] Bootsplash with kernel patch: <http://www.bootsplash.org>
- [3] Splashy: <http://splashy.alioth.debian.org/wiki/>
- [4] USplash: <https://help.ubuntu.com/community/USplash>
- [5] Inkscape: <http://www.inkscape.org>
- [6] Bootsplash configuration commands: <http://www.bootsplash.org/Config>
- [7] “DeskTOPia: Desktop Customizing” by A. Bohle and J. Luther, *Linux Pro Magazine*, April 2006, [http://www.linuxpromagazine.com/issues/2006/65/getting\\_personal](http://www.linuxpromagazine.com/issues/2006/65/getting_personal)
- [8] StartUp Manager: <http://web.telia.com/~u88005282/sum/index.html>
- [9] Artwork for Ubuntu: <http://www.ubuntu-art.org>
- [10] Artwork for Gnome: <http://www.gnome-look.org>